

Mayfair



Cookes | LIFE well furnished

Mayfair



Large Sofa

Cushion Pack includes: 2 x Accent cushions, 2 Scatters and 1 Lumbar scatter



Alternative scatter cushion packs designs are available and individual cushions can be purchased separately



Wood Finish

All furniture within the Celebrity Lifestyle collection are available in either Wenge or Oak colour.

BUYING GUIDE

- 1) Select your Sofa/Chair.
- 2) Select the 'Body Cover' for your Mayfair Furniture from the dedicated swatch book.
- 3) Select your preferred scatter cushion pack for your sofa.
AZTEC, HARLEQUIN TEAL or HARLEQUIN COBALT
- 4) Choose your preferred show wood colour OAK or WENGE



Medium Sofa

Cushion Pack includes: 2 x Accent cushions, 2 Scatters cushions



Small Sofa

Cushion Pack includes: 2 x Accent cushions

Accent fabrics are not available as the body fabric on Mayfair models. Scatter cushions can be purchased separately. Mayfair Chairs or Snugglers do not include scatter cushions.



Snuggler Chair

Scatter cushions are available as an optional extra



Chair

Scatter cushions are available as an optional extra

DESCRIPTION	REF	HEIGHT	WIDTH	DEPTH	SEAT HEIGHT	SEAT WIDTH	SEAT DEPTH	ARM HEIGHT
LARGE SOFA	LRG	910	2150	995	485	1830	575	670
MEDIUM SOFA	MED	910	1900	995	485	1580	575	670
SMALL SOFA	SML	910	1650	995	485	1330	575	670
SNUGGLER	SNG	910	1320	995	485	910	575	670
CHAIR	CHR	910	1075	995	485	660	575	670

All dimensions are approximate. Allow a minimum tolerance of c13mm on each dimension quoted and dimensions will alter slightly after use. *Every piece of timber we use is a unique material designed and produced by nature itself. Therefore we cannot guarantee an exact match between pieces.

Cushion Packs

Aztec



Harlequin Teal



Harlequin Cobalt



Model: Mayfair Large Sofa
 Fabric: Millie Shadow
 Cushion Pack: Harlequin Cobalt
 Wood Colour: Oak



Mayfair Chairs and Snuggler Chairs do not include scatter cushions. All scatter cushions are available to purchase separately.



5 Cushion Pack - Large Sofa



4 Cushion Pack - Medium Sofa



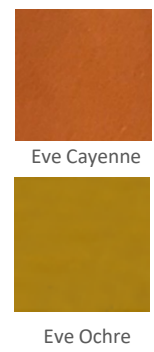
2 Cushion Pack - Large Sofa



Individual cushions are available to buy



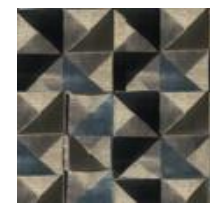
Accent Fabrics – available on Linby chairs and Linby footstools



Aztec Multi



Harlequin Teal



Harlequin Cobalt



WENGE

OAK



Show wood available in Oak or Wenge colour

Body covers – available on all Mayfair models



Millie Charcoal



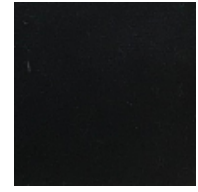
Millie Slate



Millie Shadow



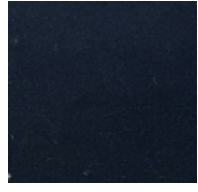
Millie Natural



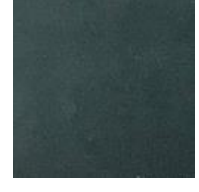
Eve Graphite



Eve Ash



Eve Dark Blue



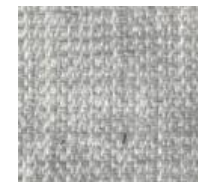
Eve Teal



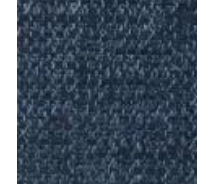
Model: Mayfair Chair
Fabric: Millie Shadow
Wood Colour: Oak



Hardy Stone



Hardy Steel



Hardy Sapphire



Hardy Teal

Linby



Harlequin Teal



Harlequin Cobalt



Aztec Multi



DESCRIPTION	REF	HEIGHT	WIDTH	DEPTH	SEAT HEIGHT	SEAT WIDTH	SEAT DEPTH	ARM HEIGHT
CHAIR	CHR	950	670	880	455	595	525	595
FOOTSTOOL	FSTL	320	610	670				



Show wood available in Oak or Wenge colour