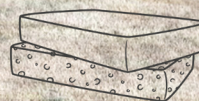


 **MADE IN
BRITAIN**



PRODUCTS SHOWN IN HOLLIS NATURAL (SOFA)
AND PLUSH TAUPE (CHAIR)
SCATTERS IN MOREMI STONE AND PLUSH TAUPE



FOAM INTERIORS



20+ FABRICS



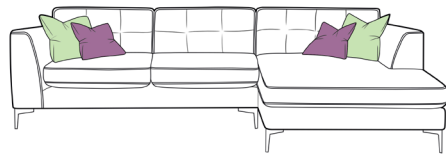
5 YEAR FRAME
WARRANTY

STEP ONE: SELECT PRODUCT/S

Select from the products to the right, paying close attention to the dimensions.

STEP TWO: SELECT FABRICS

Decide which of the fabrics in this swatch you would like to use on your sofa. Please note the fabric locations as shown below.



LOCATION 1, BODY



LOCATION 2, SCATTERS 1 & 2



LOCATION 3, SCATTERS 3 & 4
(only applicable on certain products- see right)

STEP THREE: SELECT FOOT FINISH

Finally, ensure you specify which foot finish you would like. This particular model has a Chrome or Smoked Chrome option as shown below.



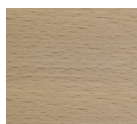
Chrome



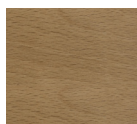
Smoked Chrome



Alternatively, a wooden finish in a choice of 4 colours is also available. Please note the difference in foot shape, as shown below.



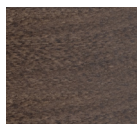
Natural



Smoked Oak



Weathered Oak



American Walnut



STANDARD BACK
LARGE CORNER GROUP LHF
(ALSO AVAILABLE AS RHF)
H W D AH SH SD SW FH
86 296 205 71 46 60 232 71



PILLOW BACK
LARGE CORNER GROUP LHF
(ALSO AVAILABLE AS RHF)
H W D AH SH SD SW FH
96 296 205 71 46 50 222 71



STANDARD BACK
SMALL CORNER GROUP LHF
(ALSO AVAILABLE AS RHF)
H W D AH SH SD SW FH
86 252 205 71 46 60 188 71



PILLOW BACK
SMALL CORNER GROUP LHF
(ALSO AVAILABLE AS RHF)
H W D AH SH SD SW FH
96 252 205 71 46 50 178 71



STANDARD BACK
LARGE CHAISE SOFA RHF
(ALSO AVAILABLE AS LHF)
H W D AH SH SD SW FH
86 310 160 71 46 60 262 71



PILLOW BACK
LARGE CHAISE SOFA RHF
(ALSO AVAILABLE AS LHF)
H W D AH SH SD SW FH
96 310 160 71 46 50 262 71



STANDARD BACK
SMALL CHAISE SOFA RHF
(ALSO AVAILABLE AS LHF)
H W D AH SH SD SW FH
86 266 160 71 46 60 218 71



PILLOW BACK
SMALL CHAISE SOFA RHF
(PILLOW BACK- ALSO AVAILABLE AS LHF)
H W D AH SH SD SW FH
96 266 160 71 46 50 218 71



STANDARD BACK
XL SOFA
H W D AH SH SD SW FH
86 230 100 71 46 60 182 71



PILLOW BACK
XL SOFA
H W D AH SH SD SW FH
96 230 100 71 46 50 182 71



STANDARD BACK
LARGE SOFA
H W D AH SH SD SW FH
86 195 100 71 46 60 147 71



PILLOW BACK
LARGE SOFA
H W D AH SH SD SW FH
96 195 100 71 46 50 147 71



STANDARD BACK
SMALL SOFA
H W D AH SH SD SW FH
86 160 100 71 46 60 112 71



PILLOW BACK
SMALL SOFA
H W D AH SH SD SW FH
96 160 100 71 46 50 112 71



SNUGGLER
H W D AH SH SD SW FH
86 138 100 71 46 60 90 71



CHAIR
H W D AH SH SD SW FH
86 103 100 71 46 60 55 71



ACCENT CHAIR
H W D AH SH SD SW FH
83 70 83 58 38 53 50 83



FOOT STOOL
H W D
42 94 75

W: Total Width (cm) D: Total Depth (cm) H: Total Height (cm) AH: Arm Height (cm) SH: Seat Height (cm) SD: Seat Depth (cm) SW: Seat Width (cm) FH: Frame Height (cm). All dimensions are approximate.